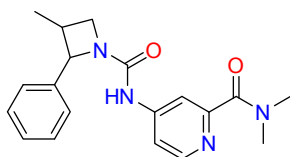
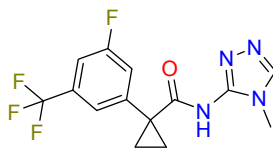


UORSY Lead-like Compounds

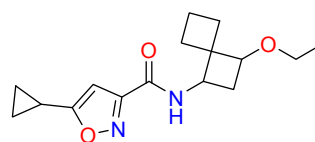
Lead-like molecules have been considered as a better starting point for drug discovery projects compared with drug-like molecules. Our lead-like subsets are diversity selections of 35, 20 and 10 thousand from the pool of our lead-like compounds.



PB1731813651



PB1767309552



PB1261983351

Physicochemical profiles of **UORSY lead-like compounds**:

$200 < MW < 350$; $HbA \leq 8$; $HbD \leq 4$; $-1 < \log P < 3$; $14 < HAC < 26$; $RotBonds \leq 7$; $40 < TPSA < 120$; $0.25 < Fsp^3 < 0.95$; $AromRing \leq 3$.

UORSY lead-like compounds are available in stock and could be delivered within 2 weeks in any customer-preferred format: as powders, dry films or DMSO solutions formatted in vials, 96 or 384-well plates. All compounds have a minimum purity of 90% assessed by 1H NMR; analytical data is provided.

For more information, please contact us at screenlibs@uorsy.com